

CONTENTS	FROM PL.	LSR
	+33' 8"	74
	+32' 8"	73
	+31' 8"	72
	+30' 8"	71
	+30' 2"	70
	+29' 8"	69
	+29' 2"	68
	+28' 8"	67
	+28' 2"	66
	+27' 8"	65
	+27' 2"	64
	+26' 8"	63
	+26' 2"	62
	+25' 8"	61
	+25' 2"	60
	+24' 8"	59
	+24' 2"	58
	+23' 8"	57
	+23' 2"	56
	+22' 8"	55
	+22' 2"	54
	+21' 8"	53
	+21' 2"	52
	+20' 8"	51
	+20' 2"	50
	+19' 8"	49
	+19' 2"	48
	+18' 8"	47
	+18' 2"	46
	+17' 8"	45
	+17' 2"	44
	+16' 8"	43
	+16' 2"	42
	+15' 8"	41
	+15' 2"	40
	+14' 8"	39
	+14' 2"	38
	+13' 8"	37
	+13' 2"	36
	+12' 8"	35
	+12' 2"	34
	+11' 8"	33
	+11' 2"	32
	+10' 8"	31
	+10' 2"	30
	+9' 8"	29
	+9' 2"	28
	+8' 8"	27
	+8' 2"	26
	+7' 8"	25
	+7' 2"	24
	+6' 8"	23
	+6' 2"	22
	+5' 8"	21
	+5' 2"	20
	+4' 8"	19
	+4' 2"	18
	+3' 8"	17
	+3' 2"	16
	+2' 8"	15
	+2' 2"	14
	+1' 8"	13
	+1' 2"	12
	+0' 8"	11
	+0' 2"	10
	+0' 0"	9
	+0' 0"	8
	+0' 0"	7
	+0' 0"	6
	+0' 0"	5
	+0' 0"	4
	+0' 0"	3
	+0' 0"	2
	+0' 0"	1
	+0' 0"	PL
	+1' 1"	PRO
	-3' 9 7/8"	SE

KEY TO INSTRUMENTATION

	ETC Source-4 10°	20
	ETC Source-4 19°	16
	ETC Source 4 26°	16
	ETC S4-PAR (MFL)	60

GENERAL NOTES
 CONSULT HOUSE ELECTRICIAN IN ADVANCE OF ALL CALLS

LEGEND

COLOR	CLR
LENS	
UNIT #	5
CHANNEL	
CIRCUIT	
DIMMER #	

MW LIGHTING
 LD# 10574
 www.mwlighting.com

REVISION HISTORY

NO.	REVISION	DATE	BY
AD1	PRELIMINARY	15 JUN 22	MW
ADD	FOR THEATRICALS	18 JULY 22	MW
BD1	SUBMITTAL	18 JULY 22	MW

HOUSE LIGHTING PLOT

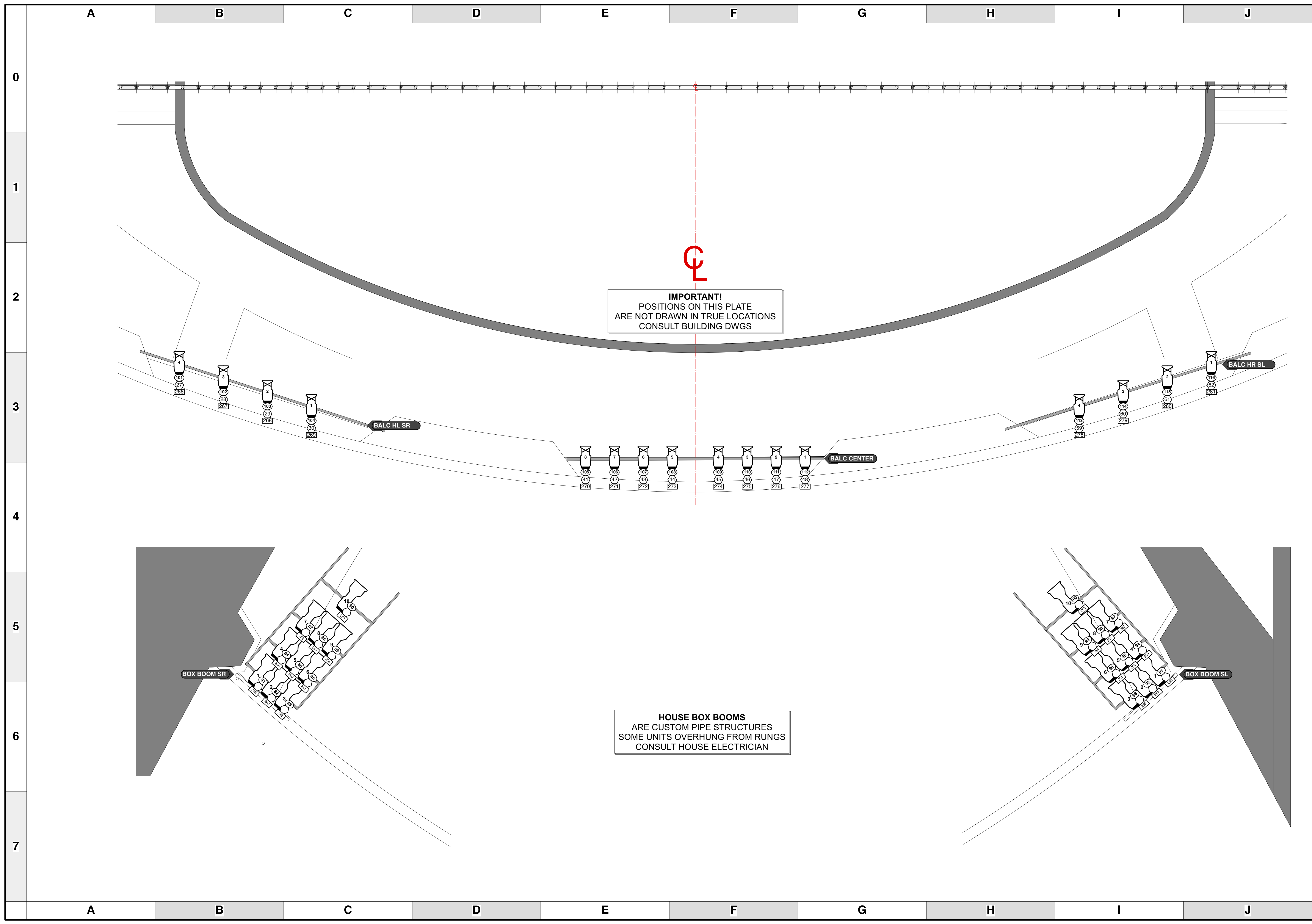
PRODUCTION STAFF
 DIRECTOR OF PRODUCTION AMY SMITH
 HOUSE ELECTRICIAN ADAM BELL
- THE FOX THEATRE -
 ATLANTA, GA

SCALE 1/4" = 1'
UNLESS OTHERWISE NOTED

PG SIZE ARCH D

DWG NUMBER
1
OF 3

LIGHTING PLOT
OVERSTAGE ELECS



IMPORTANT!
POSITIONS ON THIS PLATE
ARE NOT DRAWN IN TRUE LOCATIONS
CONSULT BUILDING DWGS

HOUSE BOX BOOMS
ARE CUSTOM PIPE STRUCTURES
SOME UNITS OVERHUNG FROM RUNGS
CONSULT HOUSE ELECTRICIAN

KEY TO INSTRUMENTATION

- ETC Source-4 10° 20
- ETC Source-4 19° 16
- ETC Source 4 26° 16
- ETC S4-PAR (MFL) 60

GENERAL NOTES

CONSULT HOUSE ELECTRICIAN IN ADVANCE OF ALL CALLS

LEGEND

COLOR: CLR
LENS: 5
UNIT #: 5
CHANNEL: 5
CIRCUIT #: 5
DIMMER #: 5

REVISION HISTORY

NO.	REVISION	DATE	BY
AD1	PRELIMINARY	15 JUN 22	MW
AD2	FOR REVISIONS	18 JULY 22	MW
BD1	SUBMITTAL	18 JULY 22	MW

HOUSE LIGHTING PLOT

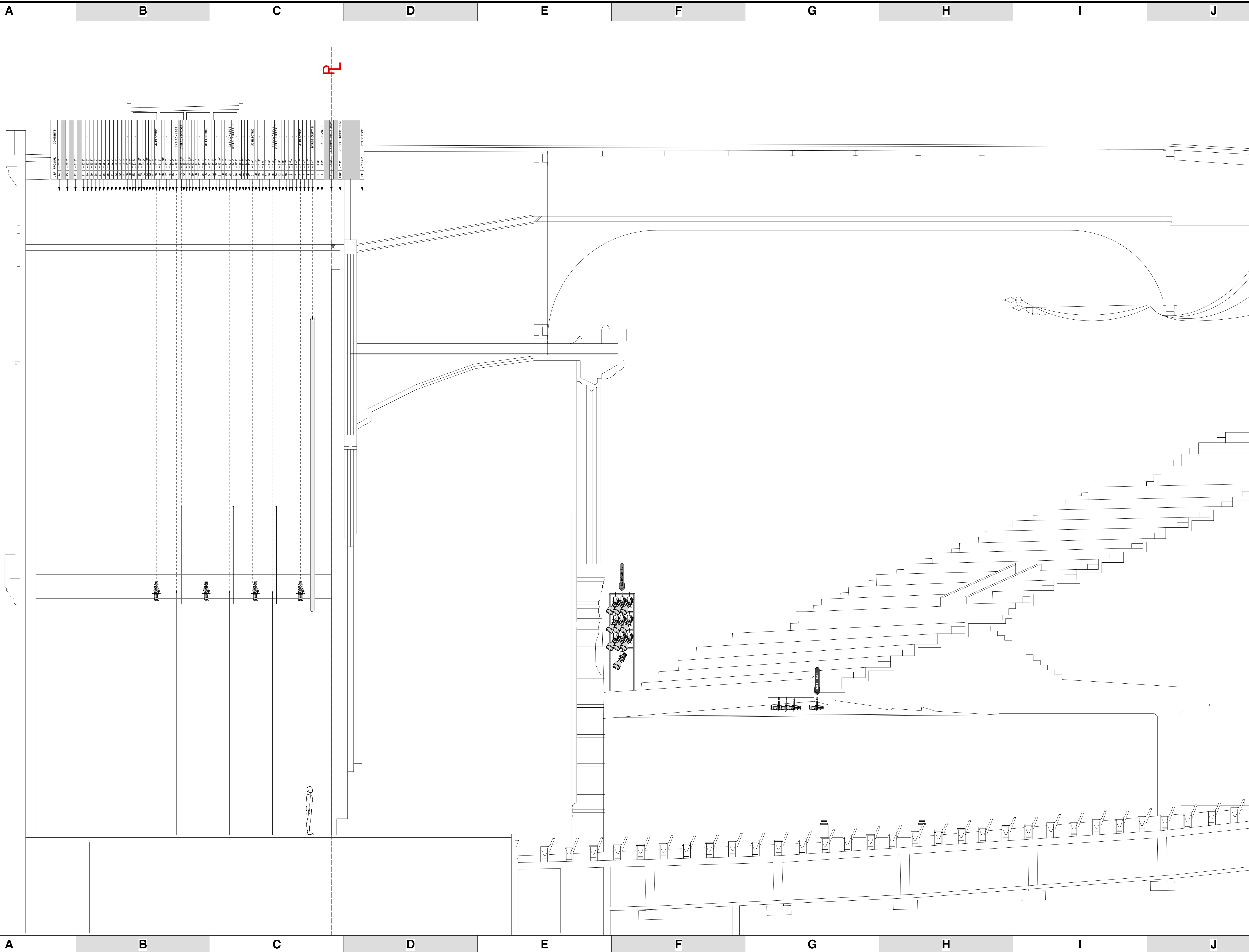
PRODUCTION STAFF
DIRECTOR OF PRODUCTION: AMY SMITH
HOUSE ELECTRICIAN: ADAM BELL
- THE FOX THEATRE -
ATLANTA, GA

SCALE: 3/8" = 1"
UNLESS OTHERWISE NOTED

PG SIZE: ARCH D

DWG NUMBER: **2**
OF 3

LIGHTING PLOT
FOH POSITIONS



KEY TO INSTRUMENTATION

- ETC Source-4 10° 20
- ETC Source-4 19° 16
- ETC Source 4 26° 16
- ETC S4-PAR (MFL) 60

GENERAL NOTES
 CONSULT HOUSE ELECTRICIAN IN ADVANCE OF ALL CALLS

LEGEND

COLOR: CLR
 LENS: 5
 UNIT #: 5
 CHANNEL: 5
 CIRCUIT #: 5
 DIMMER #: 5

REVISION HISTORY

NO.	REVISION	DATE	BY
AD1	PRELIMINARY	15 JUN 22	MW
ADD	FOR THEATRICALS	18 JULY 22	MW
BD1	SUBMITTAL	18 JULY 22	MW

HOUSE LIGHTING PLOT

PRODUCTION STAFF
 DIRECTOR OF PRODUCTION: AMY SMITH
 HOUSE ELECTRICIAN: ADAM BELL
 - THE FOX THEATRE -
 ATLANTA, GA

SCALE 1/4" = 1'
UNLESS OTHERWISE NOTED

PG SIZE ARCH D

DWG NUMBER **3**
OF 3

LIGHTING PLOT SECTION @ CL